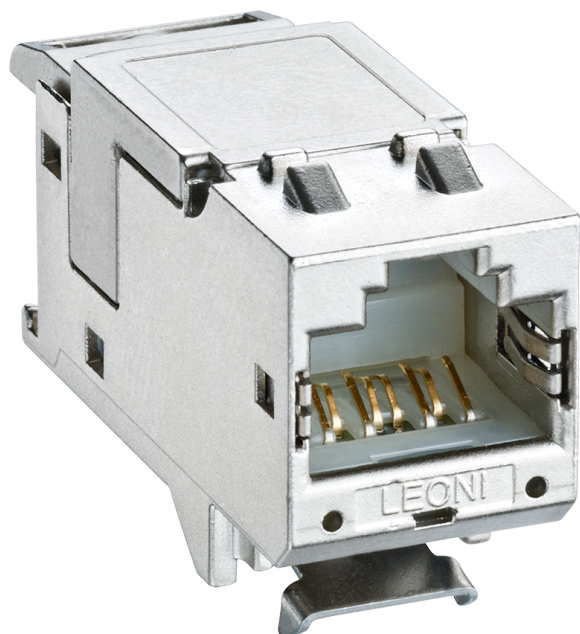


MegaLine[®] Connect45 jack moduleKeystone[®] formatCategory 6_A**Constructive characteristics**

Material (insulating parts)	Polycarbonat
Material	FR4 (printed circuit board)

Construction

Material (housing)	Full metal; die-cast zinc, nickel-plated
Material	FR4 (printed circuit board)

Electrical characteristics

Temperature range	-40°C - +70°C
Insertion force (max.)	30 N
Insertion cycles (front) (min.)	1000
Insertion cycles (module cable plug) (min.)	100

Connections

Mating face	RJ45
suitable for conductor cross-section (AWG)	AWG 27, AWG 26, AWG 24, AWG 23, AWG 22

Electrical characteristics (LF) at 20 °C

Contact resistance (max.)		20 mOhm
Insulation resistance between contacts (min.)	min.	500 mOhm
Dielectric strength contact-contact (min.)	min.	1000 V DC/AC
Dielectric strength contact-shielding (min.)	min.	1500 V DC/AC
Current rating (50°C)		1.25 A

MegaLine[®] Connect45 jack module

Keystone[®] format

Category 6_A

Standards, certificates and approvals

Connector standard	IEC 60603-7-51
Mating durability	1000x min. acc.to IEC61300-2-2
Cabling standard	ISO/IEC 11801, EN 50173-1
Power supply	IEEE 802.3bt, 4PPoE
Certification	GHMT PVP

Item description (catalogue)	Part number
Category 6 _A	LKD9ZQ01000000