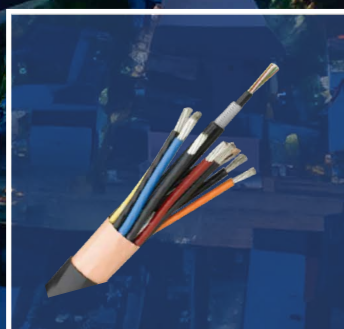
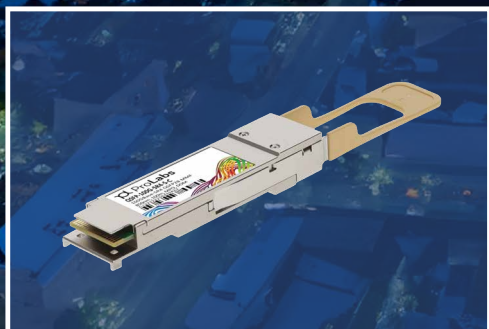


Amphenol

Network Infrastructure Products

The Amphenol family of companies offers a wide variety of products for use in all types of networks – Fiber, Copper, Wireless and Satellite. The items shown in this catalog are representative of product lines from across the globe. Contact your Account Representative to understand those products that are available in your area to solve your needs.



Cabelcon
An Amphenol Company

Splice Closure Solutions

Fiber Sealed Drop Closures (FSDC)



- Standard SC drops
- 8 port or 16 drop case
- Available with PLC splitters
- Aerial, pole, wall, ped, below grade use

Fiber Sealed Drop Closure for Hardened Cables (FSDC-H)



- OptiTap compatible ports
- 8 or 12 port case
- Available with PLC splitters
- Aerial, pole, wall, ped, below grade use

Fiber Optic Dome Closures (FODC)



- Common dome form factor
- 144, 288, 576 splice case sizes
- Aerial, pole, wall, ped, below grade use

Fiber Optic Round Closures (FORC)



- Compact size
- Up to 36 splice
- Drop closure in a small handhole use
- Direct buried repair closure

Buried Plant Solutions (Below Enclosures and Vaults)

Below Grade HDPE Enclosures (CBGE)



- Rated for light-duty placement, pedestrian traffic
- Lightweight, molded polyethylene hand-holes
- Available in four rectangular and two round sizes

Tier-Rated Underground Enclosures (TRUE)



- Rated for non-deliberate vehicular traffic
- Proprietary advanced composite material
- Tier 15 & 22. Lightweight and stackable

Fiber Distribution Hubs

Fiber Hub Terminals (CFIT-H)



- Small to medium subscriber base
- Distribution up to 144 subscribers
- Slot for up to five splitters for incremental growth

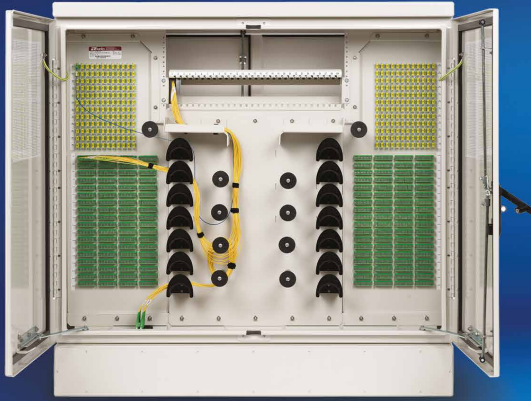
Fiber Flexibility Pedestals (CFFP)



- Medium to large subscriber base
- Floodproof and can be installed in almost any location
- Available in four sizes with up to 72, 96, 144 and 288 fiber counts

Fiber Distribution Hubs (Continuation)

Optical Hub Cabinet (OHC)



- Medium to large deployments
- Intuitive fiber routing in a compact and environmentally protected fiber cabinet
- Accommodates 96, 144, 288, 432, 576 and 864 subscribers
- Can be pad, pole or vault mounted
- Multiple cable entry locations are positioned at the bottom

Optical Broadband Cabinet (OBC)



- Integrated OLT with battery chamber
- Can deliver GPON, EPON, XGS-PON and NG-PON2
- Constructed from powder-coated aluminum
- Grounding bus bar with multiple grounding studs
- Charles Fiber Splitter Modules (CFSM) are available
- Centralized split in a Passive Optical Network (PON)



Multifunctional Cabinet

- Housing for network distribution
- Suitable for 48.26 cm distribution technology
- With microduct and cable management

Fiber Pedestals



Series 3 Peds
NEW SHORTER LEAD TIMES

- Blow molded HDPE
- Square non-split base
- Available in 20.32 cm and 25.4 cm sizes



Vault Mount (Optional)

- Designed for mounting directly to below-grade enclosures (BGE)
- Improves deployment flexibility
- Vault mount base option, ships with all necessary hardware

Buried Distribution Outside Plant Pedestals (BDO)



- Easy access to branch and drop splice
- Two-piece expanded capacity "split" base
- Lift-off dome provides 360° access

Broadband Pedestals (Z01, Z02, R02, B04, B05, B06)



- Cost effective environmental housing for fiber terminals
- Available in multiple dome and base sizes
- Multiple stake and bracket options

Fiber Pedestals (Continuation)

Charles Multipurpose Housings (CMPH)



- Cost effective fiber splicing option vs. vaults
- Ease of use and servicing
- Copper options available

Charles Fiber Distribution Point Pedestals (CFDP)



- Medium to large deployments
- Lift-off outer dome with self-locking mechanism
- Inner doors for max protection
- Expanded-capacity base increases stability in all soil types

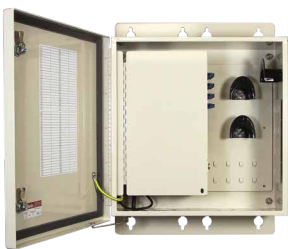
Vented Broadband Pedestals (Z05/Z06, Z08, Z14)



- Thermally optimized housings for DPUs, OLTs, & active RF devices
- Vertical & horizontal profiles
- Various equipment mounting options

Outdoor & Indoor Network Terminal

Fiber Interconnect Terminals (CFIT)



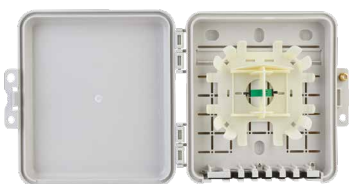
- CFIT serves up to 192 subscribers
- Splice tray basket (standard or hinged) available on feed and/or drop side
- Constructed of powder-coated aluminum

Flexible Fiber Terminals (CFIT-Flex)



- Wall, pole or pedestal mounted
- Constructed of lightweight and rugged polycarbonate
- Serves up to 48 subscribers

Infinity Premises System (IPS)



- For low-density fiber circuits
- Supports fiber demarcation and slack applications
- 1 to 8 Port models are available

Fiber Building Terminals (CFBT)



- Constructed out of powder-coated aluminum
- Subscribers can be added incrementally for grow-as-you-go scalability
- Up to 192 fiber connectors and/or 432 fiber splices

eAMT



- Multi-port Service Terminal with Drop Receptacles
- Pluggable fiber distribution point to connect optical trunk and a subscriber
- Aerially, pedestal or an underground vault mounting options
- Enables an all homes passed network using either a P2P or PON architectures
- Pigtailed or Pluggable input, 2-12 drop ports, multi-fiber or splitters

Mini AMT



- Multi-port Service Terminal with Pigtailed Drop Ports
- Compact version of the AMT ideal for at-grade or below-grade deployments
- Pigtailed drop fiber connections offer easy access and flexible routing in tight locations
- Enables an all homes passed network using either a P2P or PON architectures
- Pigtailed or Pluggable input, 2-12 drop ports, multi-fiber or splitters

Cables and Accessories

Trunk Cables



- Up to 144 fibers
- Available with CPR ratings
- Fast and toolless installation

Feeder and Drop Cables



- HFOC & HMFOC Outdoor Plant Jumper Assemblies
- Used for drop and feeder cables
- Fully sealed connection with Amphenol AMT or Mini AMT
- Compatible with OptiTap®
- Plug or in-line receptacle, breakouts to SC, LC or MPO
- Direct buried, conduit and aerial self-supporting

Coaxial Trunk Cables



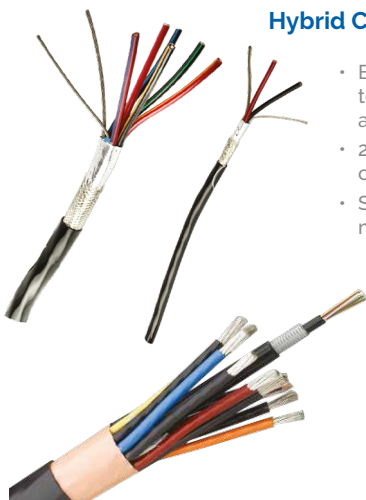
- Clean coreability and preparation
- Triple bonded
- Tighter bend radius than double-bonded cable
- No air gap; eliminates a common path for moisture found in double-bonded cable
- Eliminates suck backs and prevents suck outs
- Works with industry-standard coring tools and connectors
- NEC 820 CATV & CATVR listings available

Coaxial Drop Cables



- Copper Clad Steel Conductor
- Foamed Polyethylene Dielectric
- Bonded APA Laminate Shield
- 77% Aluminum Braid
- Moisture Inhibiting lifeTime®
- APA Laminate Shield (QuickPrep)
- Black PVC Jacket
- 0.12954 cm Galvanized Steel Messenger

Hybrid Cables



- Bundles power and fiber cables together in one sheath, reducing the amount of cables needed
- 21.1, 13.3, and 8.4 IEC power conductors for lengths up to 91.44 m
- Solutions available to connect to most radios

Node Service Cables



- 5/8-24 Node Service Cables, Straight & 90 degrees
- Extend copper drops life by using HFC Nodes with Node Service cables
- Connects distribution splice point with fiber to CATV Service Node
- 2-24 fibers and Straight/90 degree mounting options support all installation locations
- Unique body and nut design require no secondary sealing or assembly

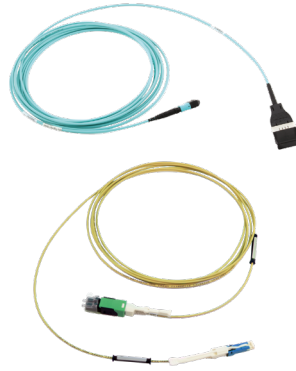
Cables and Accessories (Continuation)

Pigtail Stub Assemblies



- 12-432 Fiber OSP Pigtail with breakout to SC, LC or MPO
- Multifiber feeder cable connects main trunk splice point to street cabinet or patch bay
- Commonly installed prior to cabinet mounting for quick placement
- Pre-terminated breakouts eliminate fusion splicing at the cabinet side
- Potted breakouts and ruggedized furcations ensure reliability in extreme conditions

Patch Cords



- Different cable variations possible
- Assembled with various connectors
- Easy installation

RF Jumpers



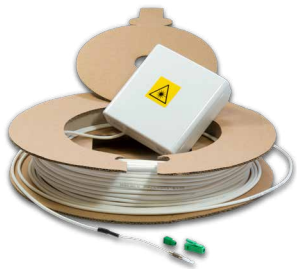
- All types of connectors
- All diameters
- All lengths
- From DC to 6GHz
- Standard, Superflexible, Fire resistant, Flame retardant, Low Loss

50/75 Ohm Coaxial Jumpers & Field-Installable Connectors



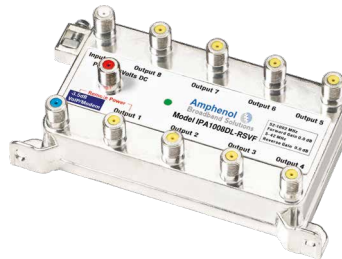
- Higher power handling
- Enhanced connection system on inner/outer conductor, reduces risk of noise/IMD in the network
- Maximum possible A++ shielding
- Connector cannot rotate
- High contact surface

Wall Outlet (ONT)



- With LC ferrule for better installation
- For customer apartment
- With up to 4 fibers

Residential SDU/MDU amplifiers



- Range of outputs and gain options
- 1.2GHz - DOCSIS 3.1 compatible
- Unique DataComm™ feature set
- MoCA 2.0 support

Linear-Series Splitter



- Can handle potential high-level RF power e.g. DOCSIS 3.1 (2 +65dBmV)
- Zinc die cast housing and fully soldered back
- Polished to a smooth finish that resists micro-pooling of environmental agents

Coaxial Trunk Connectors



- Reduced tightening torque
- Industry's first true locked connector which prevents cable from turning during installation
- Extremely resistant to chemical, salt, oils, and pollutants

Coaxial Drop Connectors



- Less network noise, greater ease of use, and better overall reliability
- Wider sleeve heel provides 360-Degree electrical contact for all cables
- Dielectric stop at F nut boosts installation quality

Satellite Connectors



- Built with features that are bendable for fast and easy installation
- Mating Surface: Self-Centering and maximising electrical contact
- F Nut: Larger thread engagement area and finger friendly design

Loop Connectors



- Duplex connector for easy measurement
- No need for another customer appointment
- Measurement from outside of the house possible

F2X Pre-connectorized FTTH Components



- Solution for simplified FTTH installations
- Pre-connectorized with cable
- Duplex look connector for easy measurement
- Measurement from outside of the house possible

Subracks with Splice Modules



- 48.26 cm distribution technology
- Modular use of Splice Modules
- Pre-assembled with pigtails

LiNC Panel



- Revolutionary rapid-deployment multi-fiber end-to-end solution
- Eliminates the need for fiber slack storage
- 48.26cm 1RU Chassis supports four integrated spools
- Up to 48 SC or 96 LC Breakout ports
- Rapid-deploy MPO-MPO connectorized factory spooled trunk cables per chassis up to 60 m in length

Tech Service Bag



- Plenty of storage for parts, iPad, and tools
- Special feet designed to prevent slipping
- Easy cable pay out and spooling
- Water resistant / heavy duty material
- No waste of plastic cores, green solution, easy reel replacements

Measurement Reel Case



- Robust case with measuring fibers
- Assembly with different fibers and connectors
- Suitable for simulations or testing active devices

Antennas

Base Station Antennas (BSA) - Macro Site, Rural, and Rooftop Site



- High-performance macro cell panel antennas
- Up to 20 ports multiband platforms
- Reconfigurable antennas for expanded lifespan and lower carbon footprint
- Easy and aesthetic active 5G upgrade
- World Class Windload
- Site sharing configurations
- **Integra:** The World's first upgradable antennas. Allowing Mobile Network Operators to extend antenna lifespan



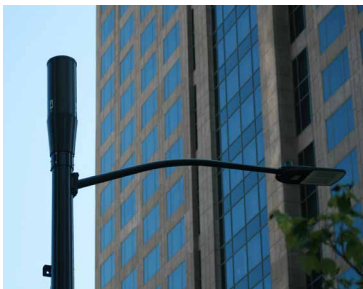
Integra

Low Visual Impact Antennas



- Cylindrical Low visual impact solutions
- From single to three-sector configurations
- Massive MIMO integration Kit available for active 5G

Small Cell Antennas



- Wide portfolio
- Supporting space-constrained environment
- Low visual impact solution
- Large variety of form factors

All In One



- Turnkey medium cell solution
- Omni / bi / trisector configurations
- Cabinet / Mast / Antenna / Jumpers

Pole Concealment

SHRD60



- Enclosed solutions for optimum protection and aesthetics of Small Cell nodes
- Multiple color & sizes are available
- Mounts to any type of pole with optional pole mounting kits

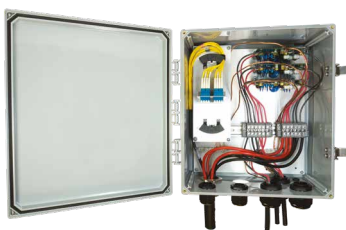
Pole Top Concealment Shrouds



- Aesthetically pleasing concealment of radios and remote equipment at small cell, densification, and DAS remote sites
- Protects equipment in a variety of environments

Enclosures

Distribution Boxes



- Ruggedized, compact design, built to accommodate both F/O and DC conductors
- Input & output glands for Hybrid, discrete, or both
- Hinged re-enterable IP67 Box
- Multiple mounting options such as poles, wall, & ladders

Cable and Accessories

Hybrid Cables



- Customized cable solution, connect BBU to RRH/Active Antenna at any cell site, rooftop and small cell
- Scalable cable support 2 to 48 F/O per cable (SM or MM); 2 to 18 DC conductors (5,3, 8,4, 13,3, 21.1 IEC) in a single cable sheath
- Versatile connectorized solutions compatible with most RRH vendors (Ericsson, Nokia, Samsung, Huawei, OpenRAN OEMs)
- Ruggedized, outdoor rated solution, built to endure decades in extreme environmental conditions

Discrete FTTA / PTTA



- Separate trunks for fiber and power
- F/O trunks from BBU to RRU
- DC trunks from BBU to RRU
- Ruggedized, outdoor rated solution, built to endure decades under extreme environmental conditions

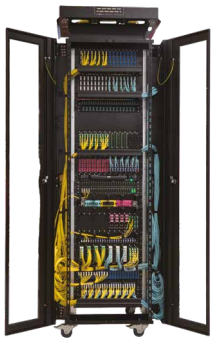
Accessories



- Grounding kits
- Pulling Grips
- Hangers and grommets
- Others

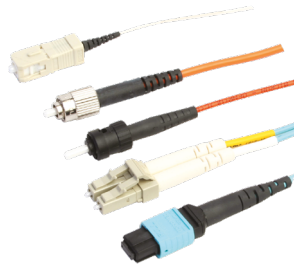
IT - DATA CENTER/DATACOM

Network Cabinet



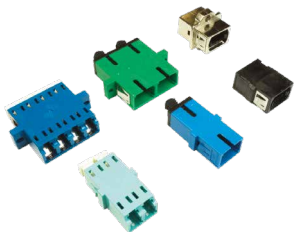
- 42 – 62 HE possible
- 19 frame with adjustable mounting rails, individually configurable
- Up to 1500 kg load capacity
- Security Rack with electronic locking system, camera, and intelligent software available
- With cooling system expandable

Indoor Fiber Assemblies



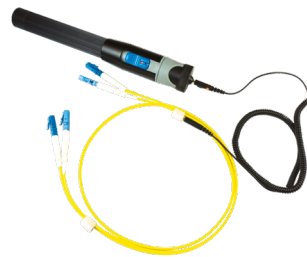
- Comprehensive solution for hyper-scale, enterprise, datacenter, storage, and networking applications
- Diverse connector types - SC, LC, MPO, FC and others, for compatibility with various cable designs
- VSFF cable assemblies available for high density environments
- Trunk cable solutions facilitate cabling between network cabinets, with specialized wiring options

Fiber Adapters



- Standard and Shuttered options- SC, LC, MPO, ST, FC
- EMI adapters in straight and angled configurations
- Stackable LC and MPO adapters aggregate a high number of connections in a small footprint

Traceable Fiber Solution



- Eliminates connection errors in dense environments
- Visual indicator on each end of the jumper
- Cut OPEX by reducing installation, maintenance, and troubleshooting time
- The traceable patchcord targets high-density & high-congestion areas across a bay or inter-bay connection

Printed Flex Circuit Solutions



- Efficient solutions for high fiber systems
- Custom routed flexible fiber circuit
- Available with various connector terminations
- Multiple interconnect solutions to complement on board engines and supports optical backplanes

C2E Hyper Density Fiber Panels



- Modular rack system from Amphenol Network Solutions
- High density solution with up to 144 LC connections per RU
- Suitable for patching and splicing

Turnkey Solutions



Our many years of experience make us the right partner for planning and implementing your fiber optic networks. We support you in every project phase: from planning, delivery, installation and commissioning to after-sales service.

- The all-round offer shortens the installation time, lowers costs and reduces the amount of documentation required
- All cabling systems are customer-specific and precisely optimized to meet your needs
- Future-proof cabling is designed for longevity, contributing to sustainability

EDGE COMPUTE SOLUTIONS

ENCLOSURES ON THE EDGE



Pad Mount Cabinets (CUBE PM Series)

- Available in 16 - 44 RU units
- Available with either 48.26 cm or 58.42 cm rails
- Optional integrated power
- Multiple thermal management options available
- Options for remote monitoring
- Compliant with GR-487-CORE



Modular Cabinets (CUBE Modular Series)

- Ultimate flexibility for outdoor edge deployments
- Multiple standard bays can be mixed and matched
- Configuration of up to 4 bays
- Additional bays can be integrated on-site later
- Variety of power & thermal management options



Walk-In Cabinet (WIC)

- Lighter weight alternative to concrete shelters
- Ability for remote site installation with limited maintenance
- Can be configured with multiple thermal systems
- Energy savings over current concrete shelters and huts
- 25.4 cm X 25.4 cm footprint, can be customized
- Multiple sizes available

Enclosures (Continuation)



Battery Backup Cabinets (CUBE BB Series)

- Provides controlled environment for batteries
- Includes venting for battery outgassing
- Meets seismic requirements
- Individual battery string disconnects
- Includes all battery wiring

Pole Mount Enclosures (CUBE SC Series)



- Rack space for mounting high-power MEC servers
- Optional integrated power
- Multiple thermal management options available
- Self-contained, secure low profile unit
- Integrated with power and thermal management
- Additional low-profile SC enclosures available
- GR-487-CORE compliant

Wall/Pole Mount Cabinets (CUBE RL Series)



- Available to up to 20 RU enclosures
- Provide superior environmental protection
- Available accessories are pole mount kits and slide-out trays
- Meets NEMA 4X / NEMA 3 depending on version

Accessories

DC Power



- Extensive line of fuse panels and circuit breaker panels for secondary, and tertiary (third-level) power distribution and protection applications
- Multiple fusing options and installer friendly designs

Datacenter+Central office - Fiber Management



- FlexTrax® - Flexible, greater ease of access, and better fiber protection
- WaveTrax® Fiber Raceway - End-to-end solution designed to deliver reliable fiber optic network performance and protection

ProLabs Transceivers



- Every product is coded and tested in our inhouse UK & US labs.
- Compatible with more than 100 EOMs
- From 1G to 800G
- Prices up to 70% lower than the OEMs
- Reach upto 160km (SR, LR, ZR, ZR+)
- Complying with MSA standards
- 90% of orders shipped within 48 hours
- 24 x 7 x 365 global support
- Lifetime warranty

ProLabs Direct Attach Copper Cables (DACs) & Active Optical Cables (AOCs)



- Compatible with more than 100 EOMs
- From 1G to 800G
- Prices up to 70% lower than the OEMs
- Low power consumption and low latency
- Complying with MSA standards
- 90% of orders shipped within 48 hours
- 24 x 7 x 365 global support
- Lifetime warranty

Energy Storage & Communications Solutions



Walk-In Cabinet (WIC)

- Lighter weight alternative to concrete basestation shelters
- Available in 3.04 m X 3.04 m, 3.04 m X 4.87 m and 3.04 m X 6.09 m
- High temperature, thermal system failure, and intrusion alarms available
- Ideal for extreme temperature environments
- Technician-friendly enclosure - no exposure to the elements while working



Modular Cabinets (CUBE Modular Series)

- Ultimate flexibility for outdoor EV infrastructure deployments
- Multiple standard bays can be mixed and matched
- Configuration of up to 4 bays
- Additional bays can be integrated on-site later
- Variety of power and thermal management options

Communications Solutions



Pad Mount Cabinets (CUBE PM Series)

- Available in 16 - 44 RU units
- Available with either 48.26 cm or 58.42 cm rails
- Optional integrated power
- Multiple thermal management options available
- Options for remote monitoring
- Compliant with GR-487-CORE

Rapid Installation Solutions



Composite Mounting Platform (CPAD)

- Economical alternatives to poured-in-place or precast concrete pads
- Made from durable composite materials
- Reduce time and labor at the time of installation
- Can be deployed in a single day

**EV Charger is not included*

About Amphenol

Pioneering Connectivity and Technology Solutions Worldwide

Amphenol stands at the forefront as one of the world's largest providers of high-technology interconnect, sensor, and antenna solutions. With a rich heritage of innovation and excellence, our products are at the heart of the Electronics Revolution, seamlessly integrating and empowering industries across the globe with capabilities encompassing broadband, enclosures, optics, cables, and antenna solutions.

Our Legacy and Global Reach

Founded in 1932, Amphenol has grown into a global leader, with 91,000 employees worldwide and a presence in over 40 countries on over 6 continents. Our journey is marked by a commitment to excellence, pushing the boundaries of technology to connect and protect the world

Diverse Market Expertise

We cater to a wide range of end markets:



AUTOMOTIVE



BROADBAND COMMUNICATIONS



COMMERCIAL AEROSPACE



IT AND DATA COMMUNICATIONS



MILITARY



MOBILE DEVICES AND NETWORKS

Innovation at the Core



At Amphenol, innovation is our ethos

Sustainability & Responsibility



Committed to sustainable, responsible operations

Partnering for a Connected Future

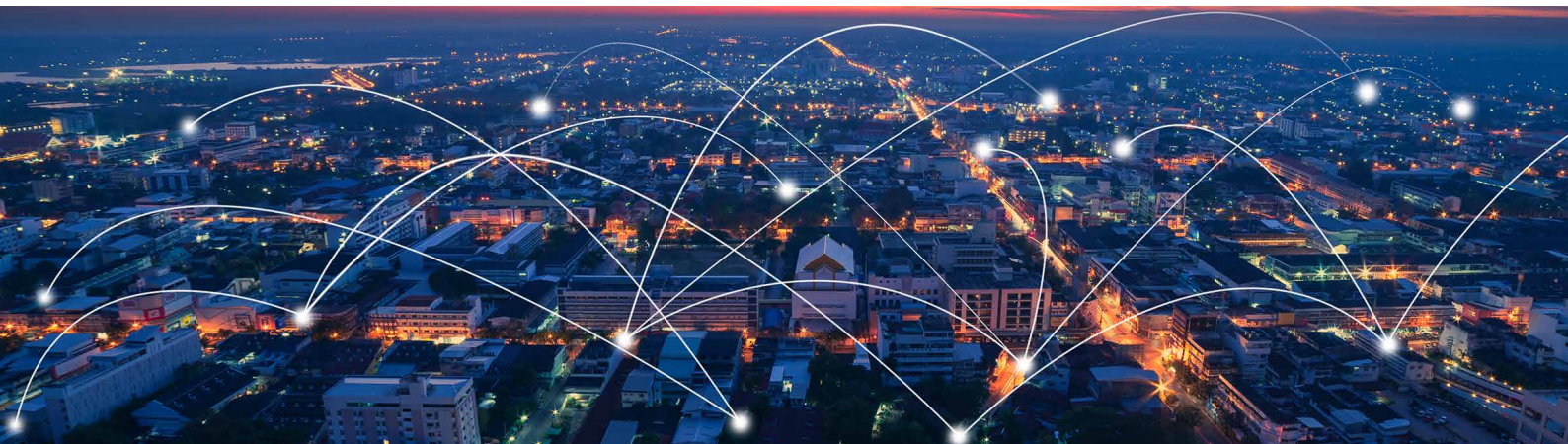


Believe in collaborative, inspiring solutions

Join Us in the Electronics Revolution



Explore Amphenol's Technology Shaping Future



Amphenol

Amphenol Corporation
World Headquarters
358 Hall Avenue
Wallingford, CT 06492 USA